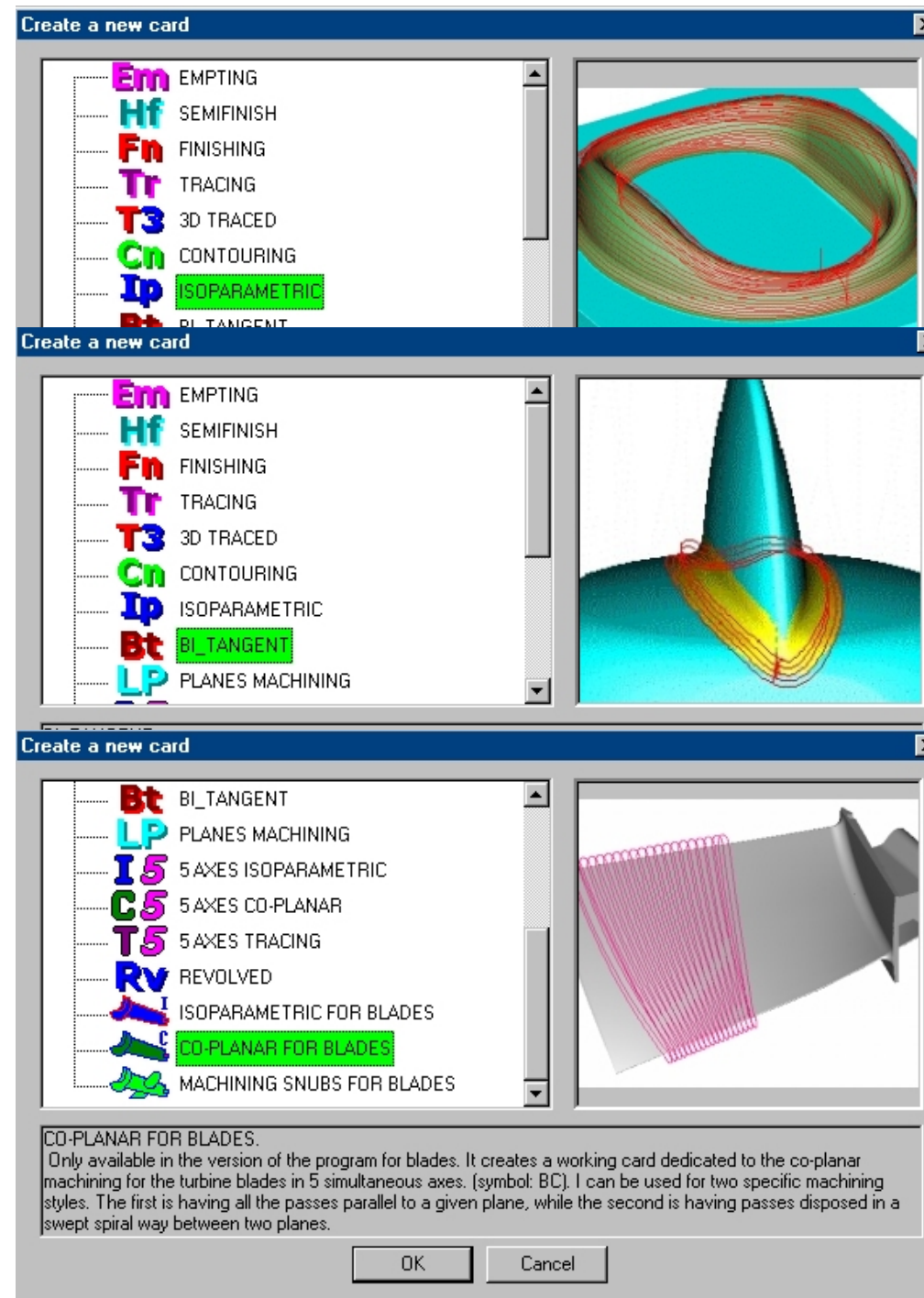


## TECHNICAL CHARACTERISTICS

- Great set of different machining styles. each one particularly cared for the optimized tool path
- Surfaces imported from IGES, VDA, STEP, ISO files, via OPEN-CASCADE libraries.
- Tools Set: Radius, Toroidal (also caved), Conical, Plane.
- Control and machining surfaces with different peel thickness.
- Automatic Complete Machining recursive.
- Optimized tool path. The tool works always in uniform way on the piece.
- Accuracy default 5 micron, completely adjustable.
- Possibility to work with the tilting head and/or rotary tables.
- Machining suited to the problematic of the high speed, with generation uniform paths on B-splines.
- Automatic identification of the inside and outside areas, male and female and sorting of the surfaces.
- Possibility to define an unlimited number of isles.
- Possibility to define boundary planes.
- Extension of the program to 5 axes machining and blades machining.
- Improved tool path optimization: using this feature it is possible to have a sensible smoothed movements on the machine with an overall machining time saving and a much better finishing.
- Effettive feedrate calculation: It is now possible to compute the effective machining speed on the working point of the tool, having in this way a great productivity benefit.



### OPERATING SYSTEMS

**Multi platform: available both in 32 & 64 bit**  
**Full compatibility**  
**with Windows Vista - 7**  
**(32bit & 64bit)**



*Tecnosoft s.r.l.*

Via Stazione, 116  
 21020 Mornago (VA)  
 ITALY

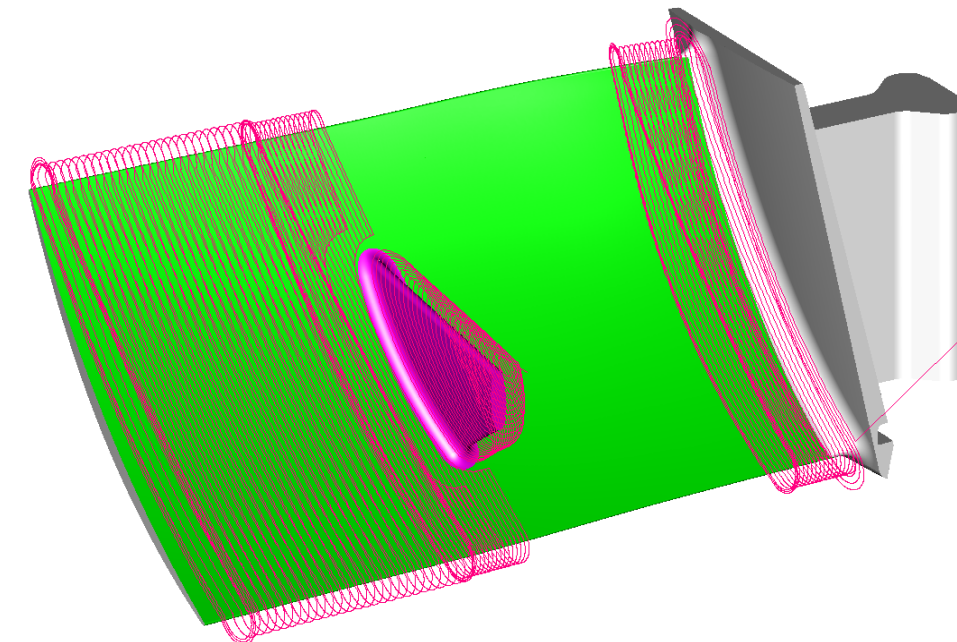
Tel.: 0039 0331 904020  
 Fax: 0039 0331 904026  
 E-mail: tecnosoft@cbferrari.com



Via Stazione, 116  
 21020 Mornago (VA)  
 ITALY

Tel.: 0039 0331 904020  
 Fax: 0039 0331 904026  
 E\_mail: tecnosoft@cbferrari.com

# TS85



**TS85 is a software tool dedicated to the machining of sculptured surfaces, particularly suited for the high speed and multi axes milling machines**

**THE POWER ON THE MULTI-DIMENSIONAL CAM**

**This software enables the proper operators to execute easily and powerfully the technological tasks given the any CAD developing phase apart.**

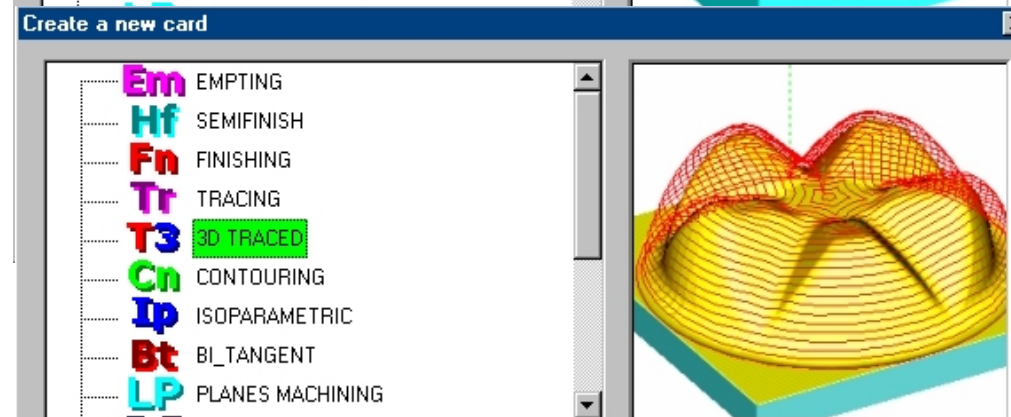
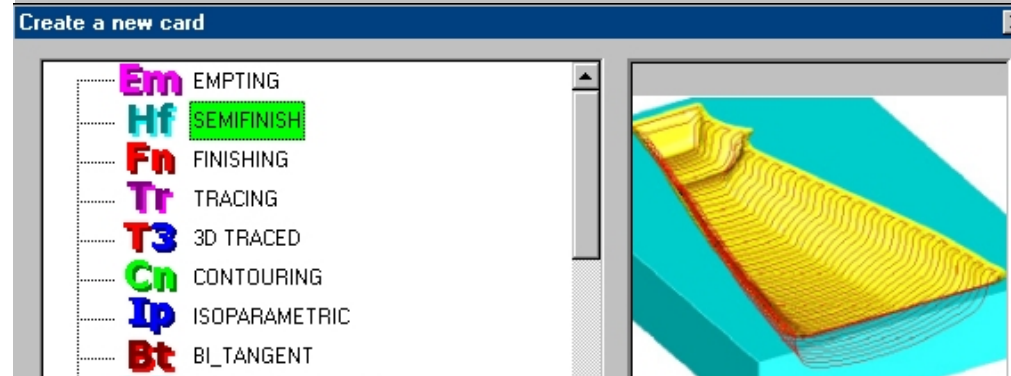
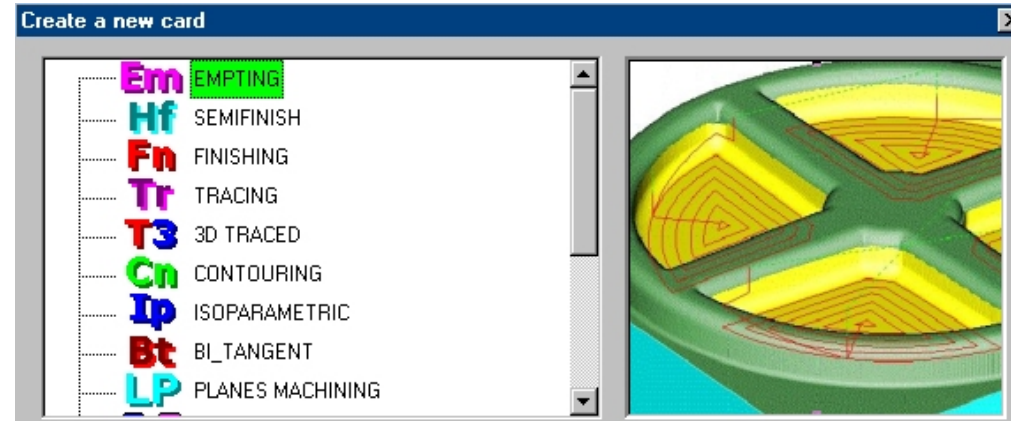
## INTERFACE OBJECTS

The system presents itself to the user in a friendly and powerful graphic interface.

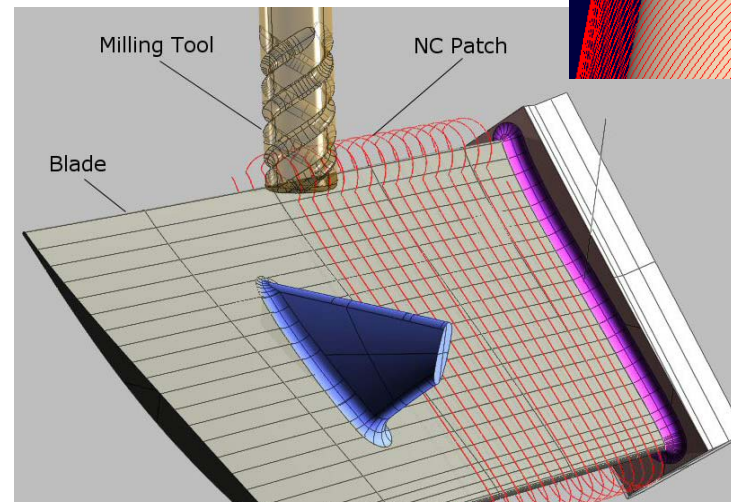
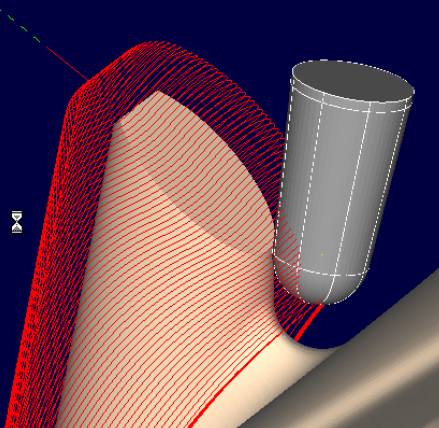
The cards, the surfaces, the curves, the tools, all are objects that the user combines in a simple and intuitive way.

## THE MACHINING CARD

The geometrical objects are grouped inside MACHINING CARDS, each one having dedicated technological parameters for the EMPTING, SEMI\_FINISH, FINISHING, TRACING, CONTOURING, ISO\_PARAMETRIC, B\_TANGENT, PLANE MACHINING, REVOLUTION, 5 Axes MaCHINING, BLADES MACHINING, machining styles, with different kind of tools and desired accuracy.

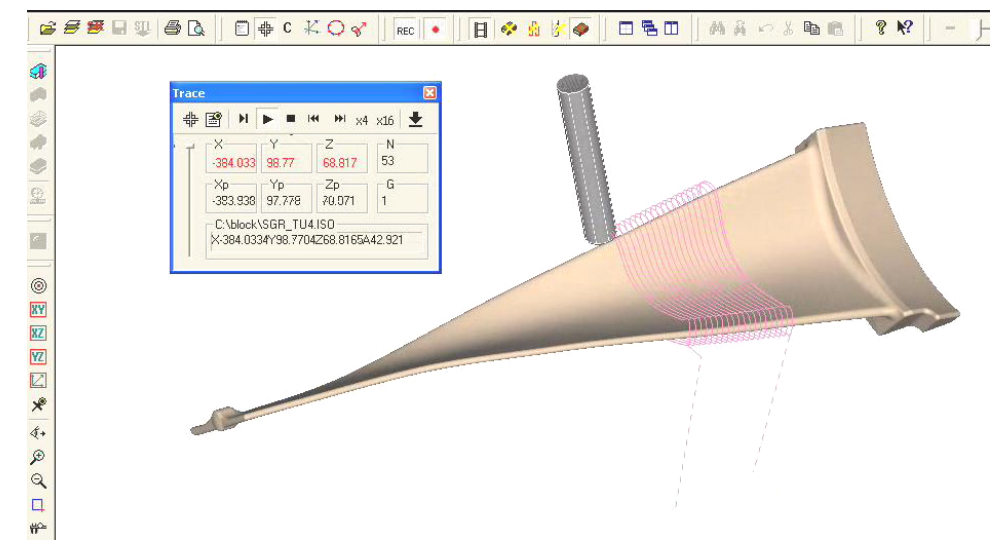


3D TRACED.  
Creates a 3D trace machining card (symbol: T3D). The 3D trace is computed onto the surface and then machining up to a given extension b... (left side) of the profile. One of the main important features is th... computed in a way that the distances are kept constant (meas...



## ADVANCED TECHNOLOGY

The program focuses all the attention on the technology. The tool movements have been optimized to the maximum degree according to the most advanced machining styles, particularly for the High-speed machining. The tool works always in an uniform way on the piece.



Easy, Powerful, Reliable, Designed in Objects, Exploits all the Power of the Operating System WINDOWS 2000-XP, Vista - 7, included Help in Line, Copy and Paste, Graphic Interface, Intuitive Dialogues Particularly Suited for a Fast Learning

